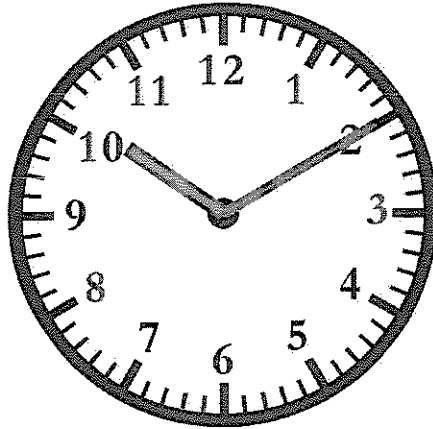
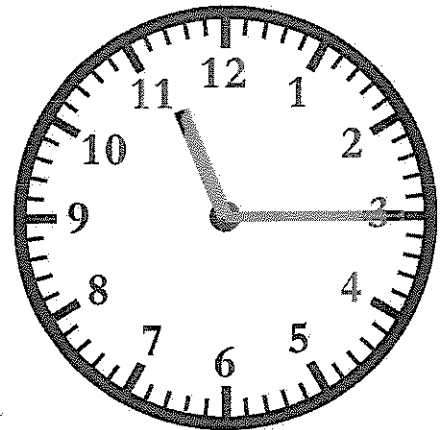


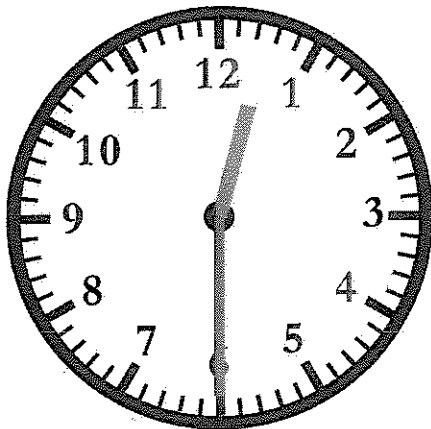
9h05



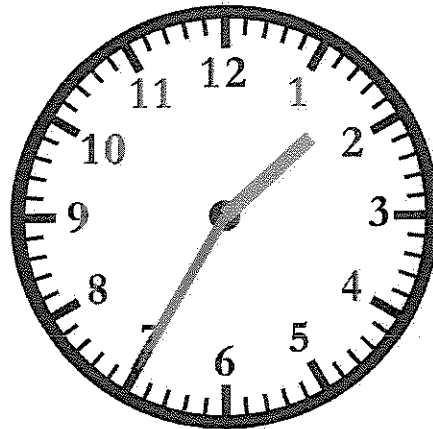
10h10



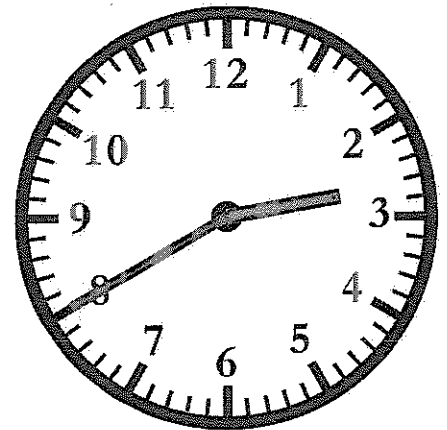
11h15



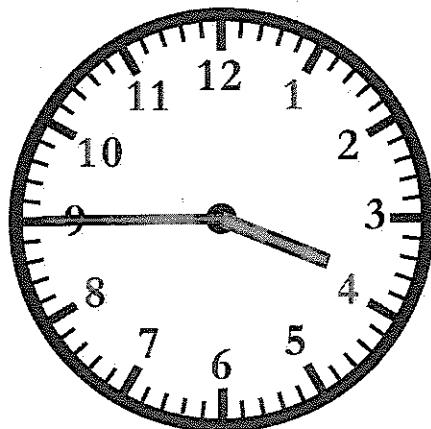
12h30



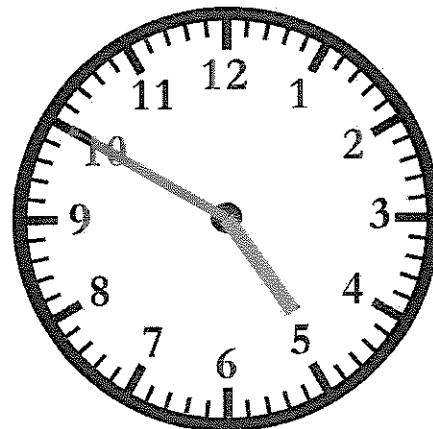
1h35



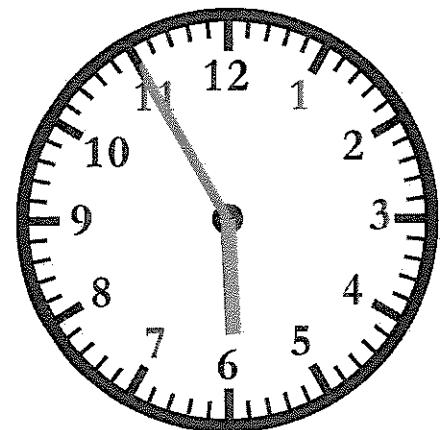
2h40



3h45



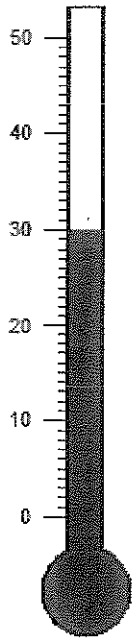
4h50



5h55

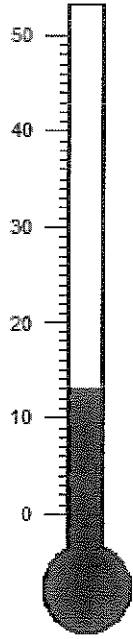
Lis les thermomètres suivants :

1)



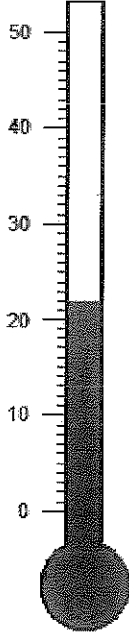
30 °C

2)



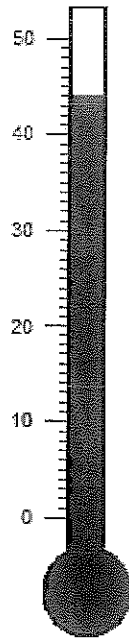
13 °C

3)



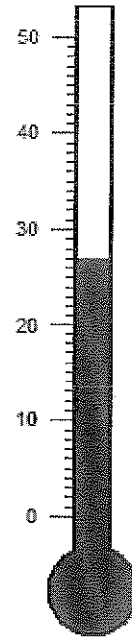
22 °C

4)



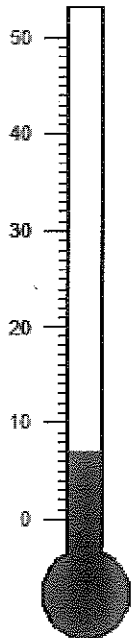
44 °C

5)



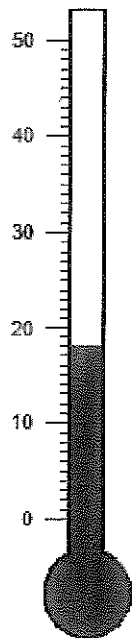
27 °C

6)



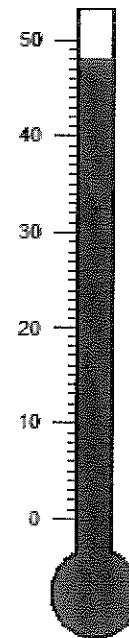
7 °C

7)



18 °C

8)



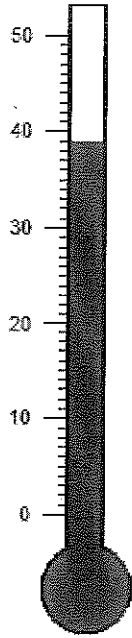
48 °C

9)



20 °C

10)



39 °C